

Reproduction, dissemination or use of this document or its contents in any form without the prior written permission of TURASAS is prohibited. Offenders will be liable for the payment of damages. All rights reserved in the event of the grant of a patent, utility model or ornamental design registration.

ISO 13920 Welded Construction			ISO 2768 General Tolerances			S 12708 Steel Casting		
<1000	6,0	0,8	<1000	6,0	0,8	L mm	Ham	Isl.
<630	4,0	0,7	<2000	1,2	0,4	Nom. Size	Class	
<400	3,0	0,6	<1000	0,8	0,3	<4000	2,0	0,4
<250	3,0	0,4	<400	0,5	0,3	<2000	1,2	0,4
100	2,0	0,3	30-120	0,3	0,2	<1000	0,8	0,3
40	1,5	0,2	2-30	0,2	0,1	<400	0,5	0,3
L mm	m ± K ±		L mm	m ± K ±		30-120	0,3	0,2
Nom. Size	Class		Nom. Size	Class		2-30	0,2	0,1
>20000	9,0	8,0	>20000	9,0	8,0	L mm	m ± K ±	
<20000	8,0	7,0	<20000	8,0	7,0	Nom. Size	Class	
<16000	7,0	6,0	<16000	7,0	6,0	<20000	8,0	7,0
<12000	6,0	5,0	<12000	6,0	5,0	<16000	7,0	6,0
<8000	5,0	4,0	<8000	5,0	4,0	<12000	6,0	5,0
<4000	4,0	3,0	<4000	4,0	3,0	<8000	5,0	4,0
<2000	3,0	2,0	<2000	3,0	2,0	<4000	4,0	3,0
<1000	2,0	1,5	<1000	2,0	1,5	<2000	3,0	2,0
<400	1,0	1,0	<400	1,0	1,0	<1000	2,0	1,5
30-120	1,0	0,5	30-120	1,0	0,5	<400	1,0	1,0
2-30	1,0	0,5	2-30	1,0	0,5	30-120	1,0	0,5
L mm	A ± E ±		L mm	A ± E ±		2-30	1,0	0,5
Nom. Size	Class		Nom. Size	Class		L mm	A ± E ±	

STEEL SHEETS NOTES:

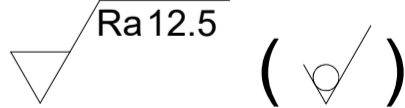
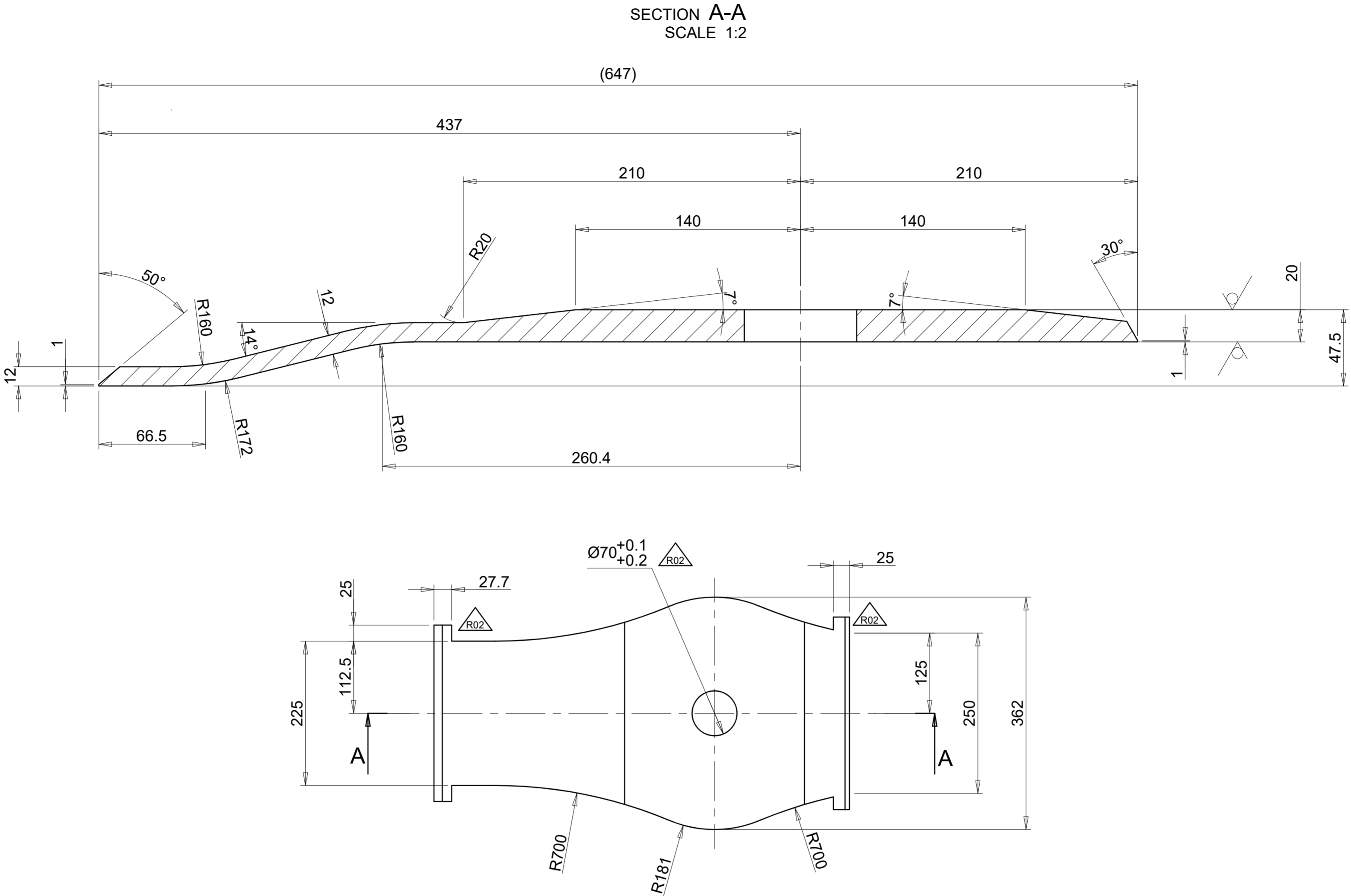
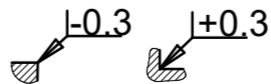
Thermal cutting - Classification of thermal cuts -
Geometrical product specification and quality tolerances
According to EN ISO 9013 - 231

Hot-rolled steel plates 3 mm thick or above -
Tolerances on dimensions and shape
According to EN10029 - B

True length theoretically according to DIN 6935

Technical Specifications					
Technical Document					
Fixture/Mould Asset ID.		R02	Resim güncellenmiştir.		17.07.2024
Coating/Heat Tre./Roughness		R01	UPDATED DRAWING		24/09/18
Paint/Color		Modf. No	Modification Description		Date
					Sign

Edge without dimension according to DIN ISO 13715



				S355J2 EN 10025		23.4	
Item No	Designation Name of Item	Qty.	Standard Identification No Company	Material Company Code	Dimension	Weight (Kg)	
ISO 21920-1		ISO 8015	ISO 2553	General Tol.	ISO 2768	f <input type="checkbox"/>	m <input checked="" type="checkbox"/>
EN 15085-2 Certification Level		CL1 <input type="checkbox"/> CL2 <input type="checkbox"/>	Weld Pro.	ISO 13920	A <input checked="" type="checkbox"/>	B <input type="checkbox"/>	E <input checked="" type="checkbox"/>
Approved		P.FARINA		Scale	TS 12708	Lm2 <input type="checkbox"/>	Lr2 <input type="checkbox"/>
Checked		M.BORLO		1 : 5		Sm2 <input type="checkbox"/>	Sr2 <input type="checkbox"/>
Prepared		Marco EID					
Date:		Parts List No:		Sheet: 1/1		Size: A2	Rev: 02



EM20.24.03.51005

End top plate